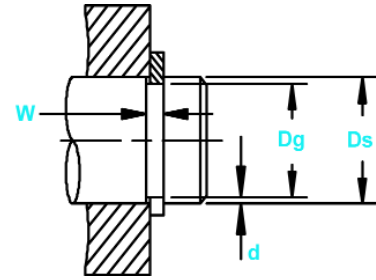
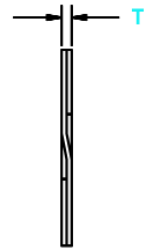
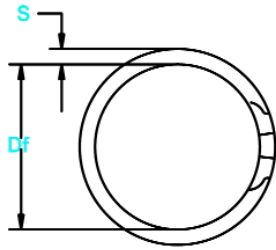


Durchmesser im ungespannten Zustand & Ringmaße

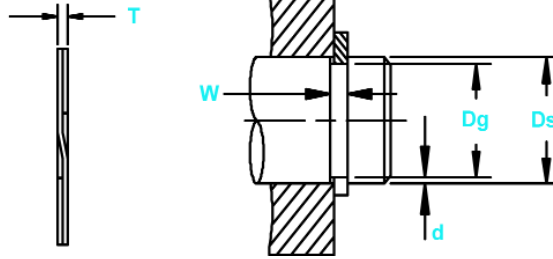


Wellendurchmesser & Nutmaße

RING NR.	Wellen durchmesser (mm)	Nutgröße				Ringgröße						Axialbelastung (kN)			
		Durchmesser		Breite		Tiefe	Durchm. im ungespannten Zustand			Dicke		Querschnitt	RING Sicherheitsfaktor von 2	NUT Sicherheitsfaktor von 3	
		Dg	Tol.	W	Tol.	d	Df	Tol.	T	Tol.	S	Pr	Pn		
DCR-13	13	12.4		1.10		0.3	12.27		0.99		1.27-1.48	13474	1901		
DCR-14	14	13.4		1.10		0.3	13.26		0.99		1.27-1.48	14510	2047		
DCR-15	15	14.3	+0.00	1.10		0.4	14.15		0.99		1.27-1.48	15547	2559		
DCR-16	16	15.2	-0.11	1.10		0.4	15.04		0.99		1.52-1.73	16583	3119		
DCR-17	17	16.2		1.10		0.4	16.04		0.99		1.52-1.73	17620	3314		
DCR-18	18	17.0		1.30		0.5	16.83		1.14		1.78-1.98	18668	4386		
DCR-19	19	18.0		1.30		0.5	17.83	+0.00	1.14		1.78-1.98	19705	4630		
DCR-20	20	19.0		1.30		0.5	18.82	-0.33	1.14		1.78-1.98	20742	4874		
DCR-21	21	20.0	+0.00	1.30		0.5	19.79		1.14		1.78-1.98	21779	5117		
DCR-22	22	21.0	-0.13	1.30		0.5	20.78		1.14		1.78-1.98	22816	5361		
DCR-23	23	22.0		1.30		0.5	21.77		1.14		1.78-1.98	23853	5605		
DCR-24	24	22.9		1.30		0.6	22.66		1.14		2.03-2.24	24891	6433		
DCR-25	25	23.9		1.30		0.6	23.65		1.14		2.03-2.24	25928	6701		
DCR-26	26	24.9	+0.00	1.30		0.6	24.64		1.14		2.03-2.24	26965	6969		
DCR-27	27	25.6	-0.21	1.30		0.7	25.34		1.14	+0.05	2.03-2.24	28002	9211		
DCR-28	28	26.6		1.60		0.7	26.34		1.44		2.26-2.46	36681	9552		
DCR-29	29	27.6		1.60		0.7	27.33		1.44		2.26-2.46	37991	9893		
DCR-30	30	28.6		1.60		0.7	28.32		1.44		2.26-2.46	39301	10235		
DCR-32	32	30.3		1.60		0.9	30.00	+0.00	1.44		3.12-3.33	41921	13256		
DCR-33	33	31.3		1.60	+0.14	0.9	30.99	-0.38	1.44		3.12-3.33	43231	13670		
DCR-34	34	32.3	-0.00	1.60	-0.00	0.9	31.98		1.44		3.12-3.33	44541	14085		
DCR-35	35	33.0		1.60		1.0	32.66		1.44		3.12-3.33	45851	17058		
DCR-36	36	34.0		1.85		1.0	33.65		1.69		3.89-4.09	55349	17545		
DCR-38	38	36.0	+0.00	1.85		1.0	35.64		1.69		3.89-4.09	58424	18520		
DCR-40	40	37.5	-0.25	1.85		1.3	37.11		1.69		3.89-4.09	61498	24368		
DCR-42	42	39.5		1.85		1.3	39.09		1.69		3.89-4.09	64573	25586		
DCR-45	45	42.5		1.85		1.3	42.06	+0.00	1.69		3.89-4.09	69186	27414		
DCR-46	46	43.5		1.85		1.3	43.05	-0.51	1.69		3.89-4.09	70723	28023		
DCR-47	47	44.5		1.85		1.3	44.04		1.69		3.89-4.09	72261	28633		
DCR-48	48	45.5		1.85		1.3	45.03		1.69		3.89-4.09	73798	29242		
DCR-50	50	47.0		2.15		1.5	46.53		1.93		4.93-5.18	87790	36552		
DCR-52	52	49.0		2.15		1.5	48.51		1.93		4.93-5.18	91302	38014		
DCR-54	54	51.0		2.15		1.5	50.50		1.93		4.93-5.18	94813	39476		
DCR-55	55	52.0		2.15		1.5	51.49		1.93		4.93-5.18	96569	40207		
DCR-56	56	53.0		2.15		1.5	52.48	+0.00	1.93		4.93-5.18	98325	40938		
DCR-58	58	55.0		2.15		1.5	54.43	-0.63	1.93		4.93-5.18	101836	42400		
DCR-60	60	57.0		2.15		1.5	56.42		1.93		4.93-5.18	105348	43863		
DCR-62	62	59.0		2.15		1.5	58.42		1.93		4.93-5.18	108860	45325		
DCR-63	63	60.0		2.15		1.5	59.39		1.93		4.93-5.18	110615	46056		
DCR-65	65	62.0	+0.00	2.65		1.5	61.39		2.41	+0.08	4.93-5.18	135725	47518		
DCR-67	67	64.0	-0.30	2.65		1.5	63.37		2.41		4.93-5.18	139901	48980		
DCR-68	68	65.0		2.65		1.5	64.34		2.41		4.93-5.18	141989	49711		
DCR-70	70	67.0		2.65		1.5	66.34		2.41		4.93-5.18	146165	51173		
DCR-72	72	69.0		2.65		1.5	68.33		2.41		4.93-5.18	150341	52635		
DCR-75	75	72.0		2.65		1.5	71.33	+0.00	2.41		4.93-5.18	156605	54828		
DCR-77	77	74.0		2.65		1.5	73.33	-0.76	2.41		4.93-5.18	160782	56290		
DCR-78	78	75.0		2.65		1.5	74.33		2.41		4.93-5.18	162870	57021		
DCR-80	80	76.5		2.65		1.8	75.81		2.41		5.89-6.15	167046	68231		
DCR-82	82	78.5		2.65		1.8	77.81		2.41		5.89-6.15	171222	69936		



Durchmesser im ungespannten Zustand & Ringmaße



Wellendurchmesser & Nutmaße

RING NR.	Wellen durchmesser		Nutgröße				Ringgröße					Axialbelastung (kN)		
	Durchmesser		Breite		Tiefe	Durchm. im ungespannten Zustand			Dicke		Querschnitt	RING Sicherheitsfaktor von 2	NUT Sicherheitsfaktor von 3	
	(mm)	Dg	Tol.	W	Tol.	d	Df	Tol.	T	Tol.	S	Pr	Pg	
DCR-85	85	81.5		3.15		1.8	80.80	+0.00	-0.76	2.91		6.15-6.40	214309	72495
DCR-88	88	84.5		3.15		1.8	83.80			2.91		6.15-6.40	221873	75054
DCR-90	90	86.5	+0.00	3.15		1.8	85.80	+0.00		2.91	±0.08	6.15-6.40	226915	76759
DCR-95	95	91.5	-0.35	3.15		1.8	90.80	-0.89		2.91		6.15-6.40	239522	81024
DCR-98	98	94.5		3.15		1.8	93.79			2.91		6.15-6.40	247086	83583
DCR-100	100	96.5		3.15		1.8	95.79			2.91		6.15-6.40	252128	85288
DCR-102	102	98.0		4.15		2.0	97.29			3.89		6.58-6.83	343778	99422
DCR-105	105	101.0		4.15		2.0	100.28			3.89		6.58-6.83	353889	102346
DCR-108	108	104.0	+0.00	4.15		2.0	103.25			3.89		6.58-6.83	364000	105270
DCR-110	110	106.0	-0.54	4.15		2.0	105.23			3.89		6.58-6.83	370741	107220
DCR-115	115	111.0		4.15		2.0	110.19			3.89		6.58-6.83	387593	112093
DCR-120	120	116.0		4.15		2.0	115.16	+0.00		3.89		6.58-6.83	404445	116967
DCR-125	125	121.0		4.15		2.0	120.12	-1.30		3.89		6.58-6.83	421297	121840
DCR-130	130	126.0		4.15		2.0	125.07			3.89		6.58-6.83	438149	126714
DCR-135	135	131.0		4.15		2.0	130.02			3.89		6.58-6.83	455001	131588
DCR-140	140	136.0		4.15		2.0	134.98			3.89		6.58-6.83	471852	136461
DCR-145	145	141.0		4.15		2.0	139.93			3.89	±0.10	6.58-6.83	488704	141335
DCR-150	150	145.0	+0.00	4.15	+0.18	2.5	143.91			3.89		7.72-8.03	505556	182761
DCR-155	155	150.0	-0.63	4.15	-0.00	2.5	148.89			3.89		7.72-8.03	522408	188853
DCR-160	160	155.0		4.15		2.5	153.85			3.89		7.72-8.03	539260	194945
DCR-165	165	160.0		4.15		2.5	158.80	+0.00		3.89		7.72-8.03	556112	201037
DCR-170	170	165.0		4.15		2.5	163.75	-1.52		3.89		7.72-8.03	572964	207129
DCR-175	175	170.0		4.15		2.5	168.73			3.89		7.72-8.03	589815	213221
DCR-180	180	175.0		4.15		2.5	173.69			3.89		7.72-8.03	606667	219313
DCR-185	185	180.0		4.15		2.5	178.66			3.89		7.72-8.03	623519	225405
DCR-190	190	185.0		4.15		2.5	183.59			3.89		7.72-8.03	640371	231497
DCR-195	195	190.0		4.15		2.5	188.54			3.89		7.72-8.03	657223	237589
DCR-200	200	195.0		4.15		2.5	193.54			3.89		7.72-8.03	674075	243681
DCR-205	205	199.0	+0.00	5.15		3.0	197.54	+0.00		4.86		10.90-11.20	863214	299727
DCR-210	210	204.0	-0.72	5.15		3.0	202.54	-1.78		4.86		10.90-11.20	884268	307038
DCR-220	220	214.0		5.15		3.0	212.47			4.86		10.90-11.20	926376	321659
DCR-230	230	224.0		5.15		3.0	222.40			4.86		10.90-11.20	968484	336280
DCR-240	240	234.0		5.15		3.0	232.33			4.86		10.90-11.20	1010592	350900
DCR-250	250	244.0		5.15		3.0	242.24			4.86		10.90-11.20	1052700	365521
DCR-260	260	252.0		5.15		4.0	250.19			4.86		12.45-12.83	1094808	506856
DCR-270	270	262.0		5.15		4.0	260.15	+0.00		4.86		12.45-12.83	1136916	526351
DCR-280	280	272.0	+0.00	5.15		4.0	270.08	-2.30		4.86		12.45-12.83	1179024	545845
DCR-290	290	282.0	-0.81	5.15		4.0	279.98			4.86	±0.13	12.45-12.83	1221132	565340
DCR-300	300	292.0		5.15		4.0	289.92			4.86		12.45-12.83	1263241	584834
DCR-310	310	300.0		6.20		5.0	297.84			5.87		15.62-16.00	576625	755411
DCR-320	320	310.0		6.20		5.0	307.84			5.87		15.62-16.00	627484	779779
DCR-330	330	320.0		6.20		5.0	317.75			5.87		15.62-16.00	1678342	804147
DCR-340	340	330.0		6.20		5.0	327.69			5.87		15.62-16.00	729201	828515
DCR-350	350	340.0		6.20	+0.22	5.0	337.64	+0.00		5.87		15.62-16.00	1780060	852883
DCR-360	360	350.0	+0.00	6.20	-0.00	5.0	347.57	-2.80		5.87		15.62-16.00	1830919	877251
DCR-370	370	360.0	-0.89	6.20		5.0	357.48			5.87		15.62-16.00	1881778	901619
DCR-380	380	370.0		6.20		5.0	367.41			5.87		15.62-16.00	1932637	925987
DCR-390	390	380.0		6.20		5.0	377.34			5.87		15.62-16.00	1983496	950355
DCR-400	400	390.0		6.20		5.0	387.25			5.87		15.62-16.00	2034354	974723